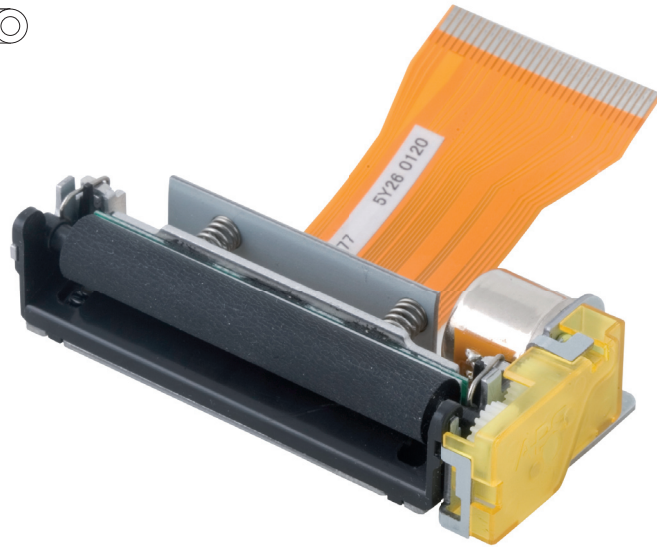


Paper



58 mm



RoHS

Specifications

FM205-HS

Print method	Thermal
Number of dots	384
Resolution (dots/mm)	8
Printing width (mm)	48
Paper width (mm)	58
Max. paper thickness (μ)	80
Paper loading	Easy loading
Printing speed (mm/s)	75
Paper detection	Photo Interrupter
Temperature detection	Thermistor
Head-up or Cover-open detection	Combined with opto sensor
Voltage range (Logic/Head)	3.0÷5.5 / 4.5÷8.5
Dot resistance (Ohm)	176 ± 4%
Energy per dot (mJ)	0.25
Stepper motor (Ohm)	Bipolar (12)
Weight (g)	40
Life/reliability	50km/100M pulses
Operating temperature (C°)	0 to 50 non cond.
Operating humidity (%)	20 to 85 non cond.
Dimensions (WxDxH mm)	69.3x32.7x15.3

Features

- Ultra compact design (width 69.3 mm, depth 32.7 mm)
- Ultra light (40 gr)
- Prints from 3V logic
- High resolution printing (8 dots/mm)
- Low consumption
- Print speed up to 75 mm/s
- Full electrostatic protection
- Max voltage 8.5 Volts
- Patented Easy loading and Easy Door Opening System
- Double opto available
- Easy loading cutter available

Applications

- Portable printers and terminals
- Hand held terminals
- Fiscal printers
- Calculators
- Measuring instruments and analyzers
- POS (point of sale)
- EFTs (electronic funds transfer)
- Data terminal devices
- Medical equipments
- Taxi meters
- Digital tachometers

Options

CSM05



Chip set

